

# Step-Through Tool *for ArcMap*



Last Update:	May 26, 2010
Install Files:	Setup.exe StepToolSetup.msi
Author:	Richard A Nava United States Geological Survey, Flagstaff Astrogeology Science Center E-mail: <a href="mailto:rnav@usgs.gov">rnav@usgs.gov</a>
Description:	This tool steps through features in a selected layer. It uses “table sorting” to order the features contained in a layer by one or two fields, and provides tools to pan and zoom-in to each feature sequentially.
Requirements:	ArcGIS 9.3 (ArcInfo, ArcEditor, ArcView license levels)

This custom ArcGIS Desktop add-on requires “.NET Framework” support. Please check the PIGWAD website for a document on how to install the support feature before installing this add-on.

([ftp://pdsimage2.wr.usgs.gov/pub/pigpen/ArcMap\\_addons/Installing\\_ArcGIS\\_NET\\_Support.pdf](ftp://pdsimage2.wr.usgs.gov/pub/pigpen/ArcMap_addons/Installing_ArcGIS_NET_Support.pdf))

## 1. Installation instructions:

Install the Step-Through Tool by double clicking the Setup.exe file and following the installation instructions in the “Step Through Tool Setup Wizard”. *NOTE: Make sure both the .msi and .exe files are in the same folder, and at the same level.* The installation routine will register the StepTool.dll with the required ArcMap components.

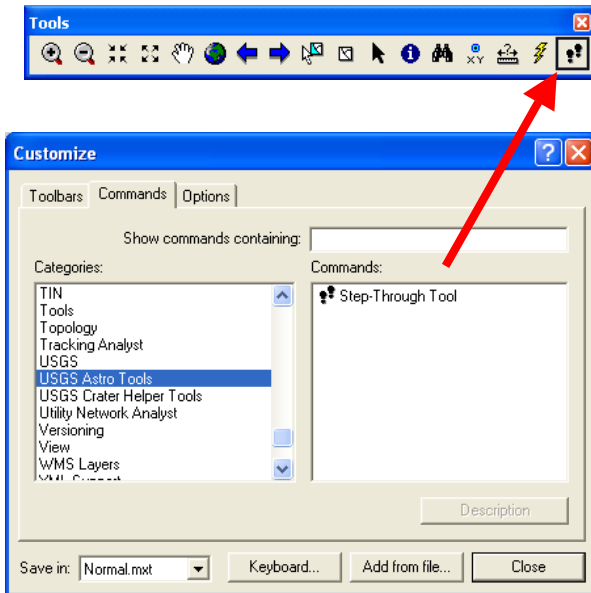
The default install folder is: “C:\Program Files\USGS Astro\Step Through Tool”.

### Important!

The “Update Table” feature included in this tool adds a new field (SORT\_ID) to the attribute table of the selected layer. It then initializes an Edit Session on the layer to update the field with a new index number.

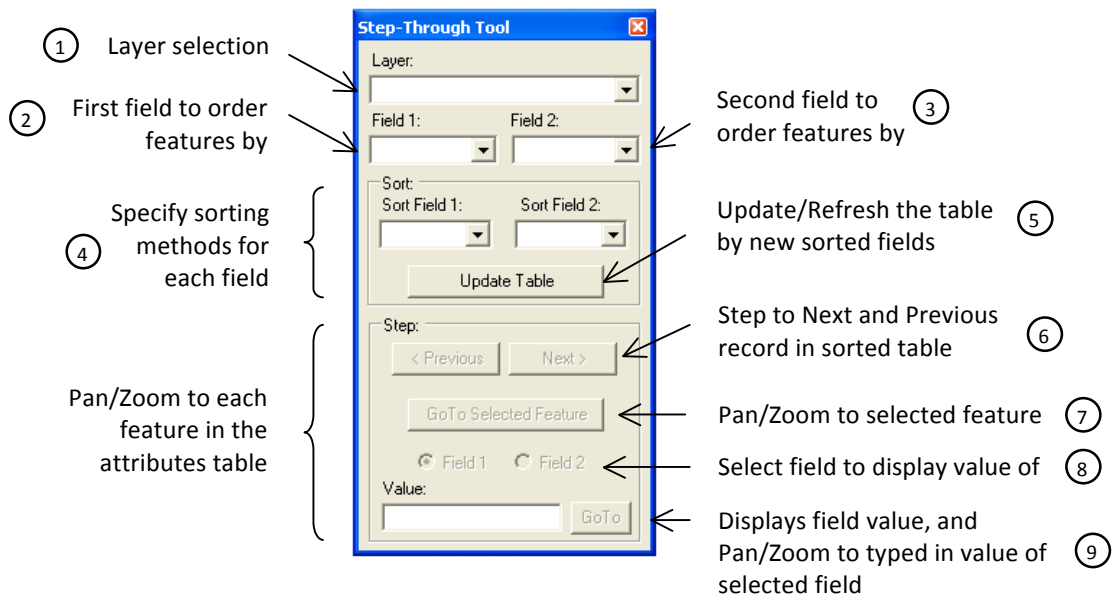
***Do not use tool if you don't want this new field added to your existing data.***

## 2. Adding to ArcMap:



- 1) After install, open ArcMap. On the main menu, click on Tools > Customize...
- 2) Under the Commands tab, look for the “USGS Astro Tools” category and select it. The Step-Through Tool command should appear under “Commands:”
- 3) Click and drag the Step-Through Tool command to any of the available

## 3. Tool Description:



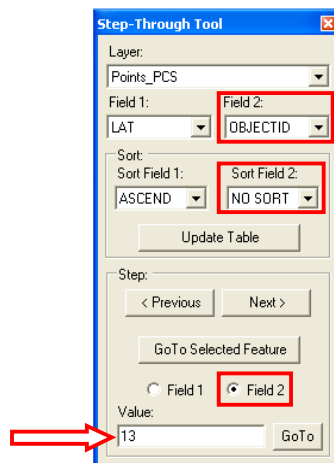
... continued on next page.

	Name	Description
1	Layer	Populated with the active Data Frame feature layers. Once selected, fields 1 & 2 dropdowns will be populated with the fields of that specific layer.
2	Field 1	First field to order features by. If a field is selected, its value will be displayed in the Value box below if the Field 1 radio button is checked.
3	Field 2	Second field to order features by. If a field is selected, its value will be displayed in the Value box below if the Field 2 radio button is checked.
4	Sort 1 & 2	Options: <i>NO_SORT</i> = No sorting applied. <i>ASCEND</i> = Sort values in ascending order. <i>DESCEND</i> = Sort values in descending order.
5	Update Table	When clicked, a “SID” field will be added to the attribute table. All the records are sorted in memory based on the field(s) selected, and a sequential number assigned to the SID field for each feature. *
6	Prev./Next	When clicked, the tool will pan/zoom to each feature sequentially by its SID*.
7	GoTo Selected Feature	1 feature needs to be selected from the layer specified on the ‘Layer’ field above. After clicking this button, the tool will pan/zoom to the feature.
8	Field Value display	Allows you to display the field values of the current feature and change it to pan/zoom to a feature based on its Field 1 or Field 2 value.
9	GoTo Value	Displays the field value of the current feature. Allows you to type a new value and pan/zoom to the feature containing that new value in the specified field.

\* *NOTE: Features will not appear sorted in the attribute table. A “Sorting-ID (SID)” number will be assigned to them sequentially in the order they are sorted in memory, but the sorting will not be applied to the actual feature class table.*

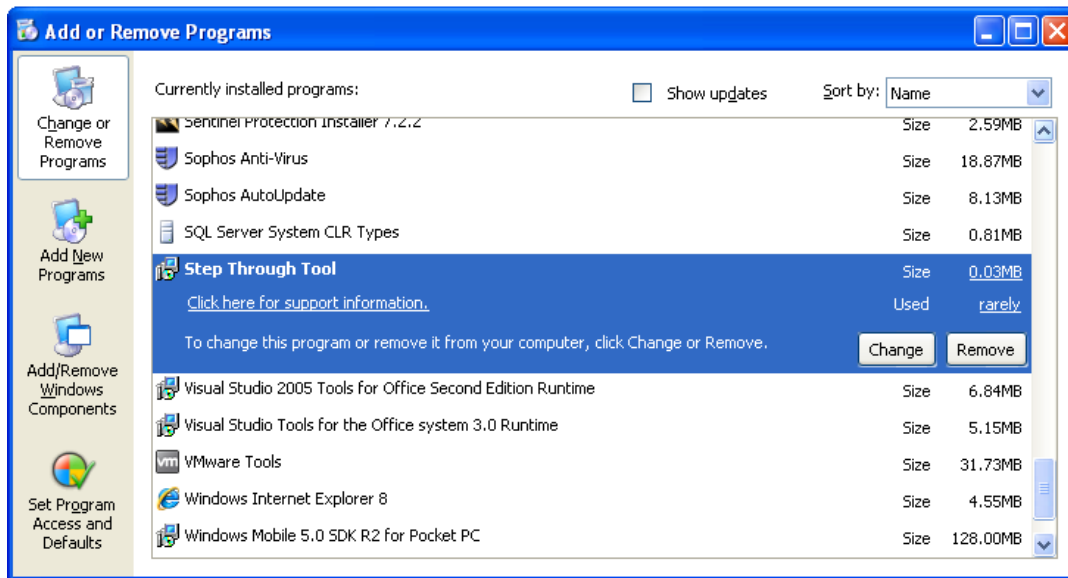
**Tip:**

If ordering features by one field, a second one can be selected (and not sorted) to show its value on the box at the bottom of the window:



## 4. Uninstalling the Step-Through Tool:

- 1) Open the Control Panel.
- 2) Double-click “Add-Remove Programs”.
- 3) Find “Step Through Tool”.
- 4) Click the “Remove” button and follow the directions.



### Contact Info:

Please send any bugs, comments, or feedback to:

[rnav@usgs.gov](mailto:rnav@usgs.gov)