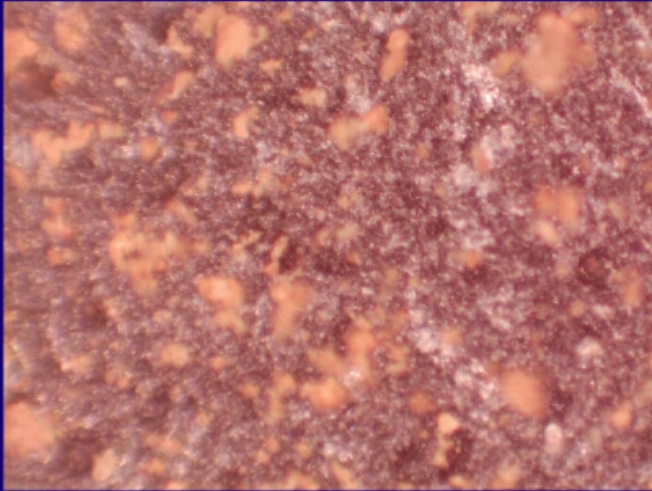


## Photomicrographs of the Coated Samples

(top) Photomicrographs of thin (left;  $19\mu\text{m} \pm 8\mu\text{m}$ ) and thick (right;  $106\mu\text{m} \pm 34\mu\text{m}$ ) coatings of JSC-1 soil deposited on SP basalt samples, with the focus at the basalt substrate. (bottom) Areal distribution maps of coated samples (basalt substrate = white; JSC-1 particles = black) computed using a variance operator on each image (thin coating =  $28\pm 7\%$  coverage; thick coating =  $94\pm 1\%$ ). Field of view is  $\sim 630\mu\text{m}$ .

**$19 \pm 8\ \mu\text{m}, 28 \pm 7\%$**



**$106 \pm 34\ \mu\text{m}, 94 \pm 1\%$**

