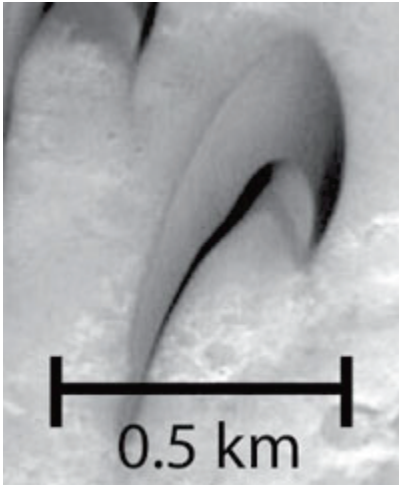


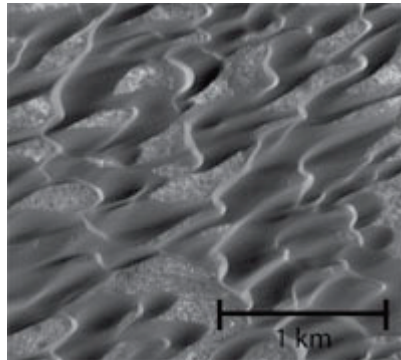
Classification of Dunes

Barchan



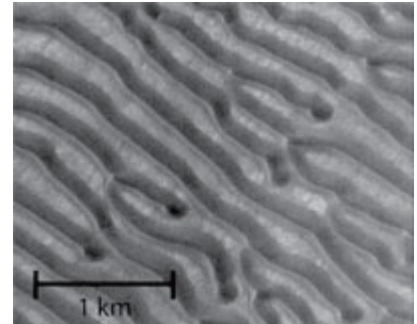
Abbreviation: B
Crescent in plan view, 1 slipface
(McKee, 1979)

Barchanoid



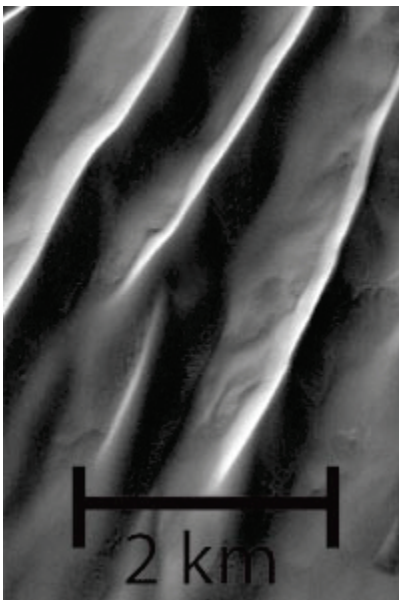
Abbreviation: Bd
Row of connected crescents in plan view, 1 slipface (McKee, 1979)

Transverse



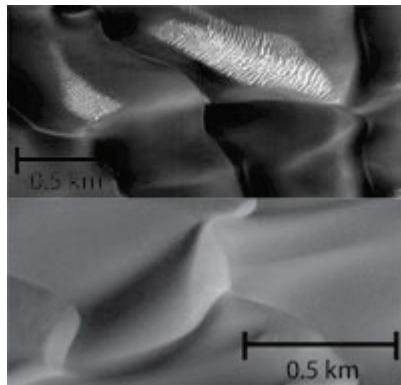
Abbreviation: T
Asymmetrical ridge, 1 slipface
(McKee, 1979)

Linear



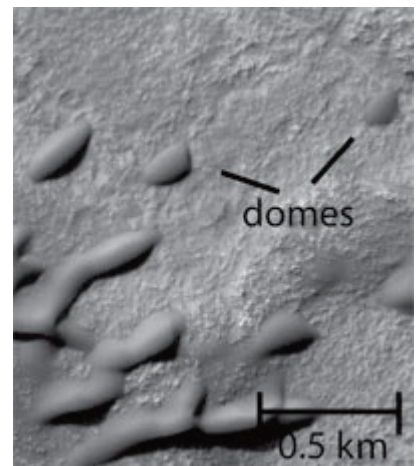
Abbreviation: L
Symmetrical ridge, 2 slipfaces
(McKee, 1979)

Star



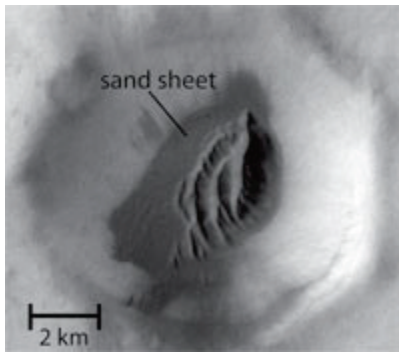
Abbreviation: S
Central peak with 3 or more arms, 3 or more slipfaces (McKee, 1979)

Dome



Abbreviation: D
Circular or elliptical mound, no slipfaces (McKee, 1979)

Sand Sheet



Abbreviation: SS

Sheetlike with broad, flat surface,
no slipfaces (McKee, 1979)

Currently Unclassified Dunes

The following are dune types that haven't yet been classified. This is typically due to lack of suitably detailed images.

