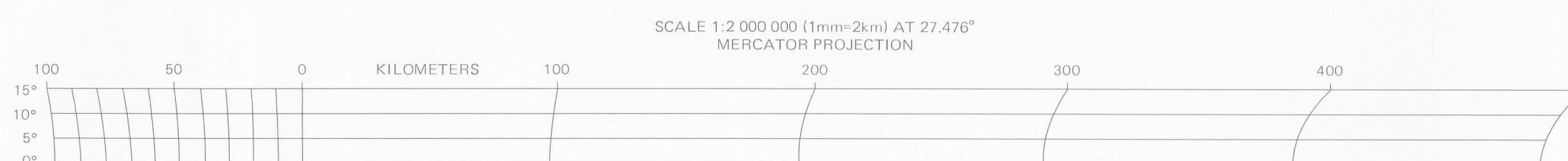
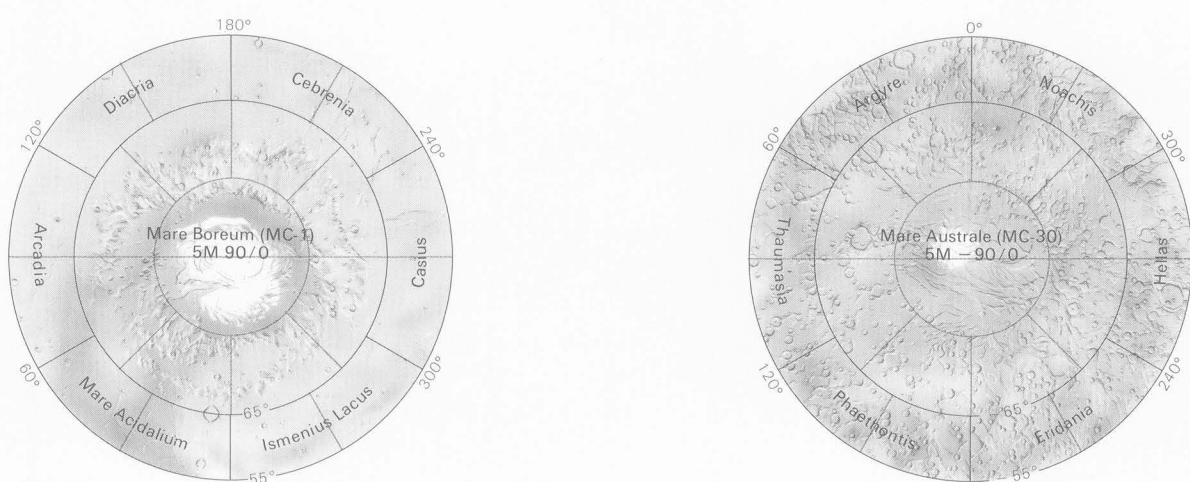




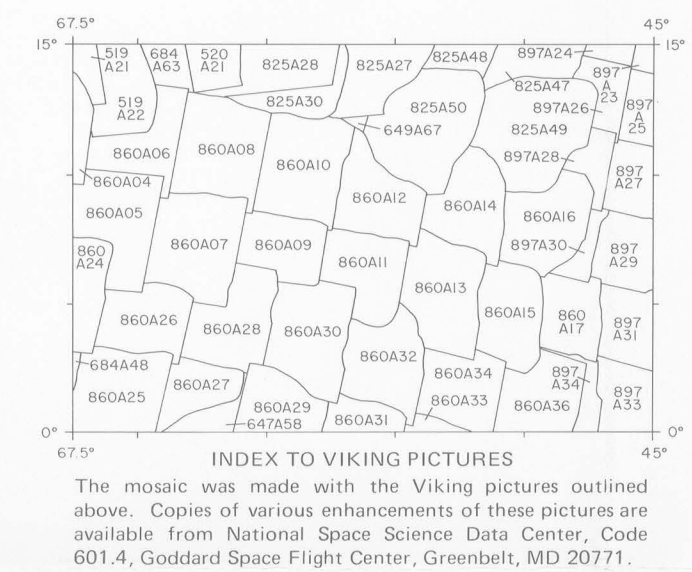
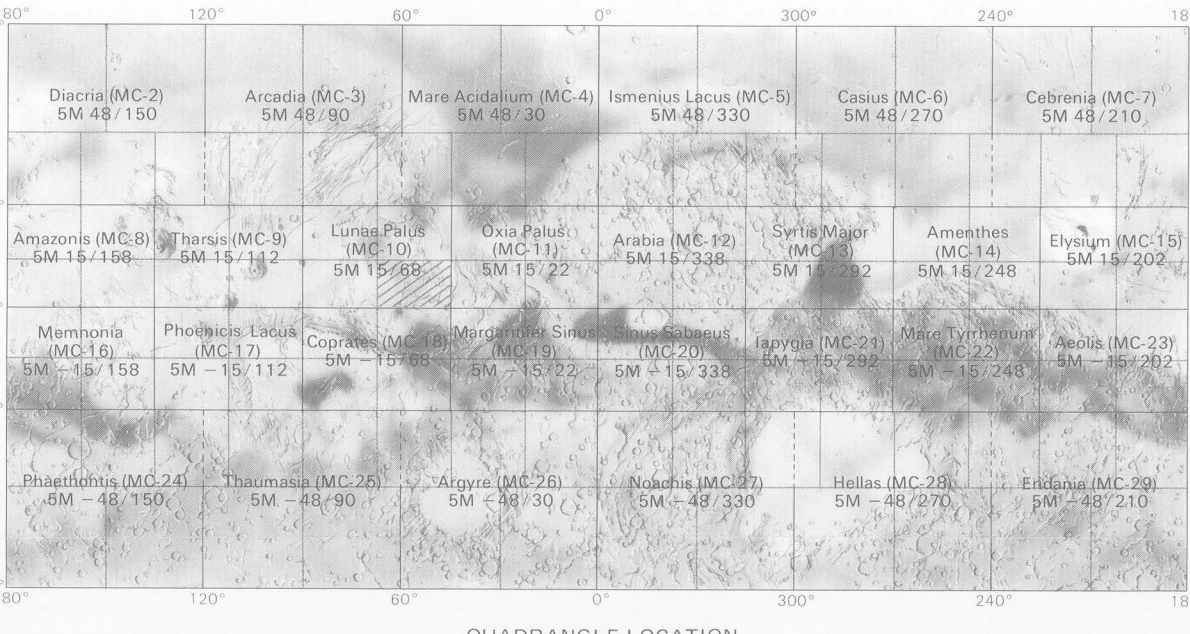
This photomosaic is part of a new series of quadrangles made from a special set of Viking Orbiter images acquired specifically for systematic global mapping. Image resolution is 130 to 300 meters per picture element. The average sun elevation angle is 20° (solar zenith angle 70°). The images have been digitally enhanced by the Jet Propulsion Laboratory's Mission and Test Imaging System to accentuate high-frequency detail. Image placement was based on the 1978 control net (Davies, M.E., and others, 1978, Control net of Mars: February 1978: The Rand Corp. R02309-NASA). At least 66 percent of the image control points lie within 0.5 km (1 km) of their published locations.



Interior - Geological Survey, Reston, Va., 1980 - G80484
Prepared on behalf of the Planetary Geology Program,
Planetary Division, Office of Space Science, National
Aeronautics and Space Administration under contract
W-13,709



- LISTING OF PUBLISHED
1:2000000 PHOTOMOSAICS
- | I No. | Quadrangle Name |
|--------|---|
| I-1183 | Coprates Southwest (MC-18 SW) |
| I-1184 | Coprates Southeast (MC-18 SE) |
| I-1185 | Memnonia Northeast (MC-16 NE) |
| I-1186 | Memnonia Northwest (MC-16 NW) |
| I-1187 | Memnonia Southeast (MC-16 SE) |
| I-1188 | Memnonia Southwest (MC-16 SW) |
| I-1189 | Phoenicis Lacus Southwest (MC-17 SW) |
| I-1190 | Phoenicis Lacus Northwest (MC-17 NW) |
| I-1191 | Phoenicis Lacus Northeast (MC-17 NE) |
| I-1192 | Phoenicis Lacus Southeast (MC-17 SE) |
| I-1193 | Argyre Northeast (MC-26 NE) |
| I-1194 | Argyre North Central (MC-26 N-C) |
| I-1195 | Argyre Northwest (MC-26 NW) |
| I-1196 | Argyre South Central (MC-26 S-C) |
| I-1197 | Argyre Southeast (MC-26 SE) |
| I-1198 | Phoenicis Lacus Northwest (MC-17 NW) |
| I-1199 | Phoenicis Lacus Northeast (MC-17 NE) |
| I-1200 | Coprates Northwest (MC-18 NW) |
| I-1201 | Coprates Northeast (MC-18 NE) |
| I-1202 | Margaritifer Sinus Southwest (MC-19 SW) |
| I-1203 | Margaritifer Sinus Southeast (MC-19 SE) |
| I-1204 | Sinus Sabaeus Southwest (MC-20 SW) |
| I-1205 | Sinus Sabaeus Southeast (MC-20 SE) |
| I-1206 | Aeolis Northwest (MC-23 NW) |
| I-1207 | Aeolis Southwest (MC-23 SW) |
| I-1208 | Aeolis Southeast (MC-23 SE) |
| I-1209 | Aeolis Northeast (MC-23 NE) |
| I-1210 | Tharsis Northwest (MC-9 NW) |
| I-1211 | Tharsis Southwest (MC-9 SW) |
| I-1212 | Tharsis Southeast (MC-9 SE) |
| I-1213 | Tharsis Northeast (MC-9 NE) |
| I-1214 | Tharsis Northwest (MC-9 NW) |
| I-1215 | Tharsis Southwest (MC-9 SW) |
| I-1216 | Tharsis Southeast (MC-9 SE) |
| I-1217 | Tharsis Northeast (MC-9 NE) |
| I-1218 | Tharsis Northwest (MC-9 NW) |
| I-1219 | Tharsis Southwest (MC-9 SW) |
| I-1220 | Tharsis Southeast (MC-9 SE) |
| I-1221 | Tharsis Northeast (MC-9 NE) |
| I-1222 | Tharsis Northwest (MC-9 NW) |
| I-1223 | Tharsis Southwest (MC-9 SW) |
| I-1224 | Tharsis Southeast (MC-9 SE) |
| I-1225 | Tharsis Northeast (MC-9 NE) |
| I-1226 | Tharsis Northwest (MC-9 NW) |
| I-1227 | Tharsis Southwest (MC-9 SW) |
| I-1228 | Tharsis Southeast (MC-9 SE) |
| I-1229 | Tharsis Northeast (MC-9 NE) |
| I-1230 | Tharsis Northwest (MC-9 NW) |
| I-1231 | Tharsis Southwest (MC-9 SW) |
| I-1232 | Tharsis Southeast (MC-9 SE) |
| I-1233 | Tharsis Northeast (MC-9 NE) |
| I-1234 | Tharsis Northwest (MC-9 NW) |
| I-1235 | Tharsis Southwest (MC-9 SW) |
| I-1236 | Tharsis Southeast (MC-9 SE) |
| I-1237 | Tharsis Northeast (MC-9 NE) |



CONTROLLED PHOTOMOSAIC OF THE LUNAE PALUS SOUTHEAST QUADRANGLE OF MARS

M 2M 7/56 CM

MC-10 SE

1980

NOTE TO USERS
Users noting errors or omissions are urged to indicate them on the map and to forward it to U. S. Geological Survey, Building 4, Room 54, 2255 North Gemini Drive, Flagstaff, Arizona 86001. A replacement copy will be returned.

For sale by Branch of Distribution, U.S. Geological Survey,
1200 South East Street, Arlington, VA 22202, and Branch of Distribution,
U.S. Geological Survey, Box 25288, Federal Center, Denver, CO 80225