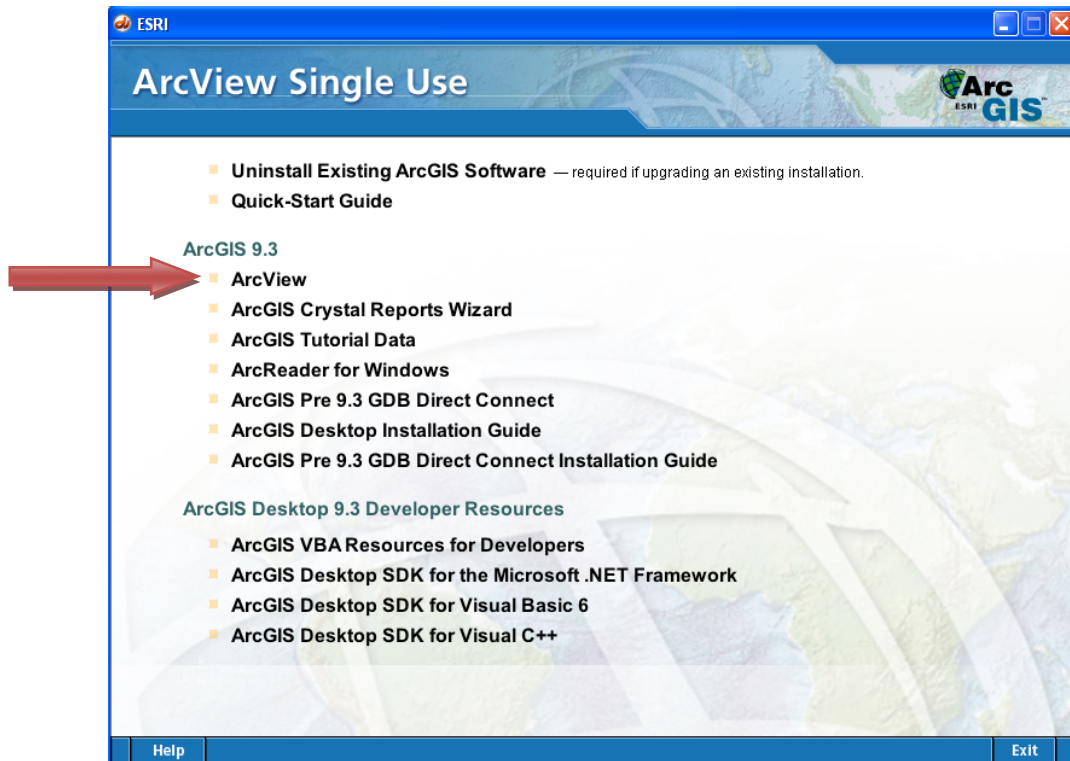
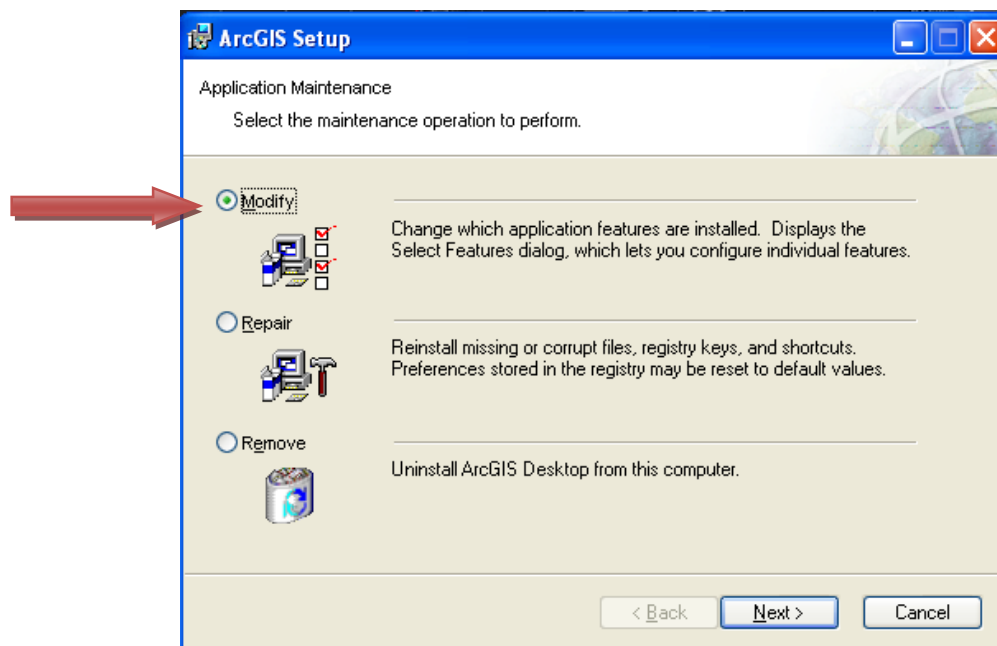


Enabling the “.NET Support” feature option in ArcGIS

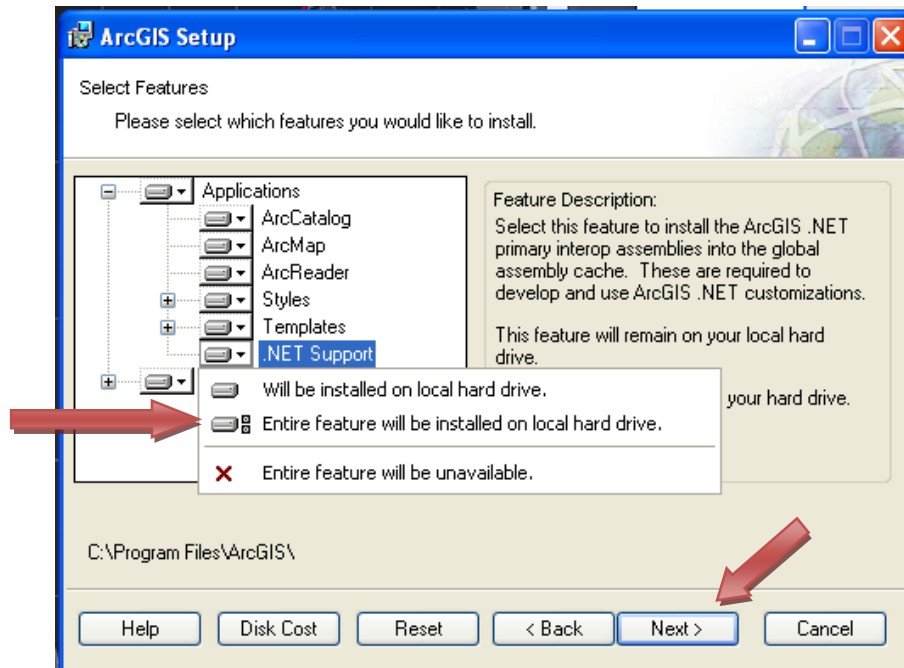
1. Insert the ArcGIS installation disc
2. Begin as if you were installing ArcGIS again: load the “ArcGIS Setup”. For this example, click on “ArcView” (yours can be ArcEditor, or ArcInfo)



3. Select “Modify” and click “Next >”



4. Enable the “.NET Support” feature by clicking on its arrow and selecting: “Entire feature will be installed on local hard drive”
5. Click “Next >”



6. Click “Next >” to begin installation

