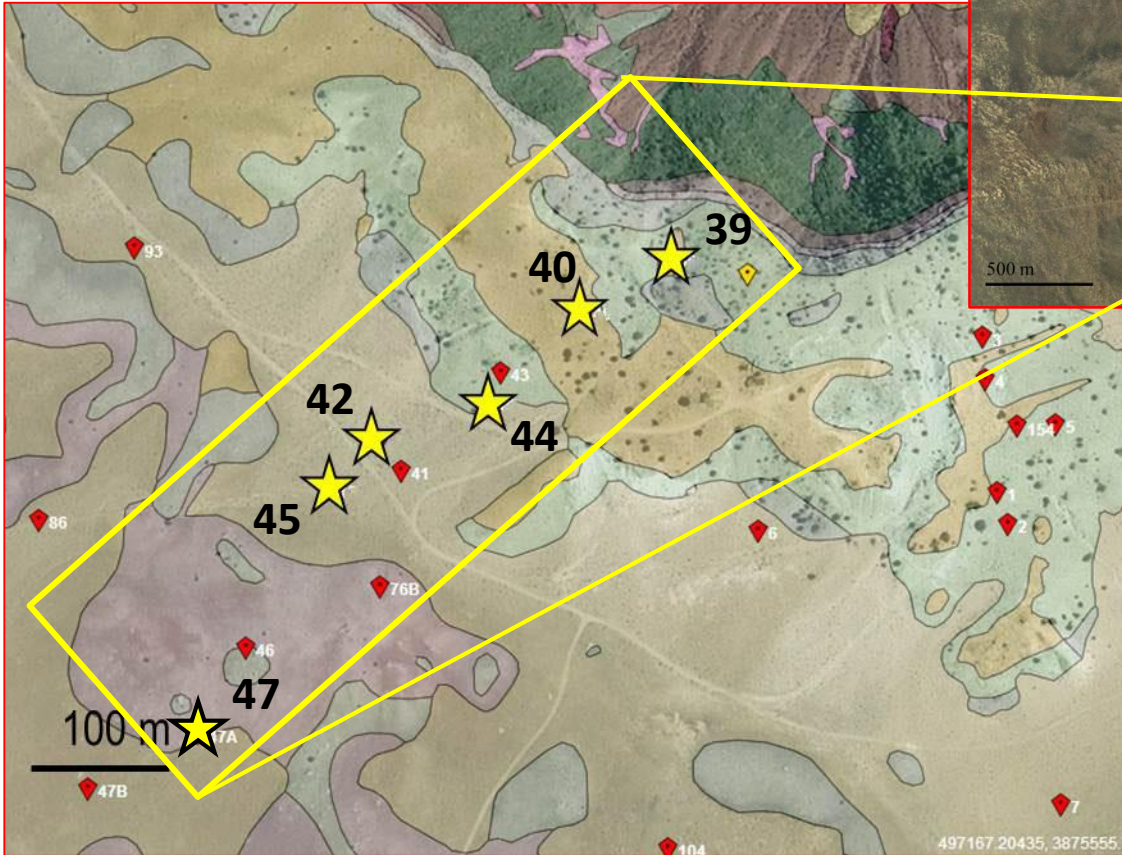
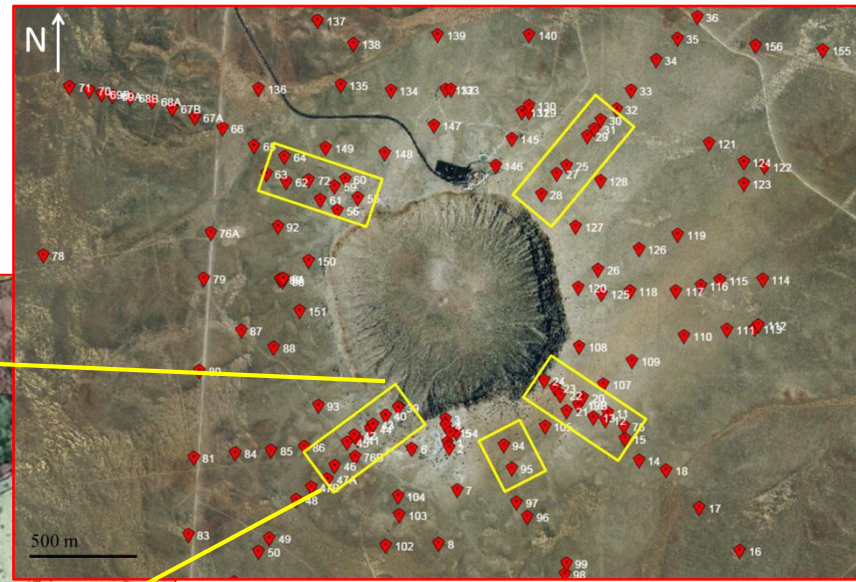
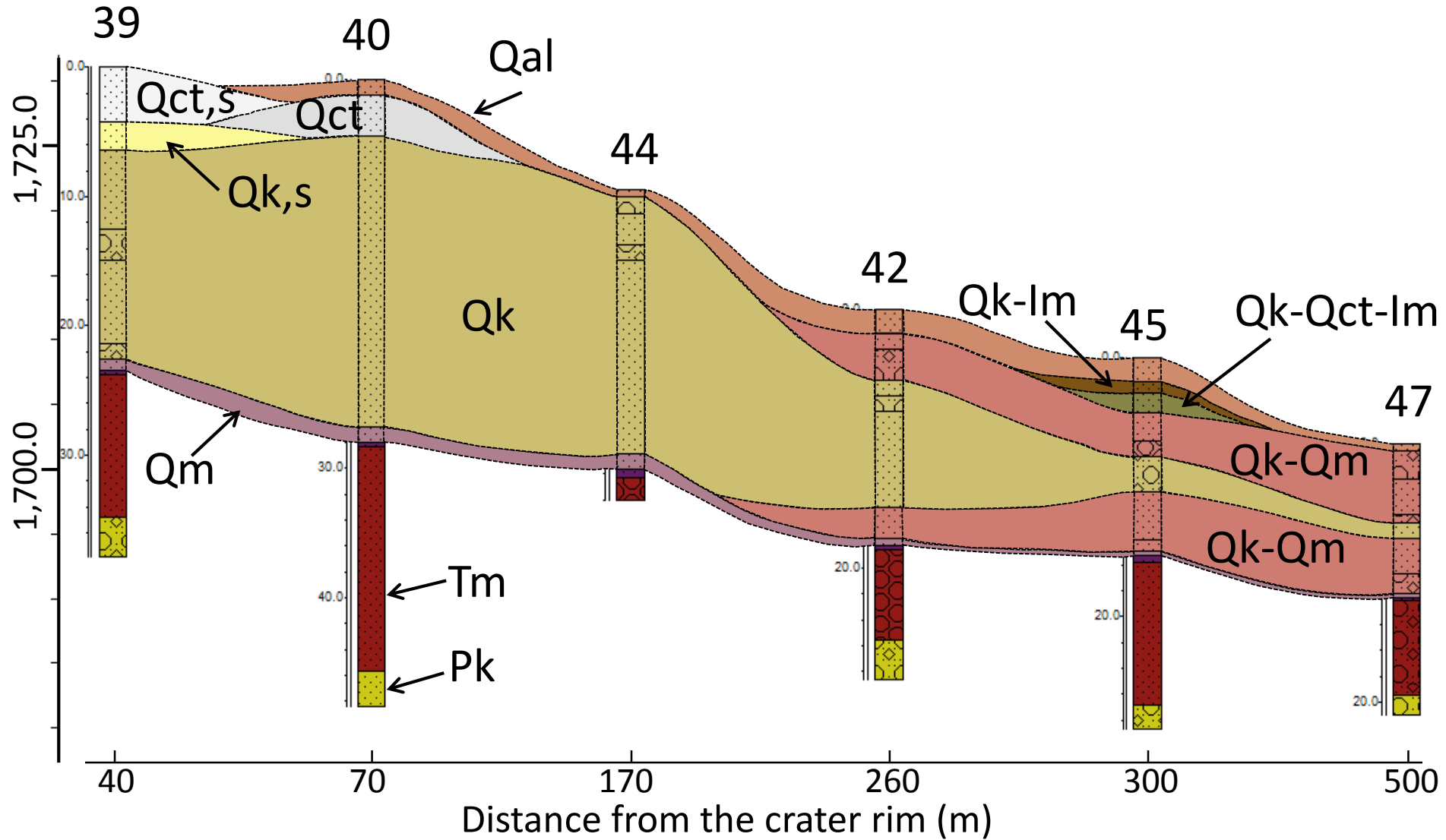


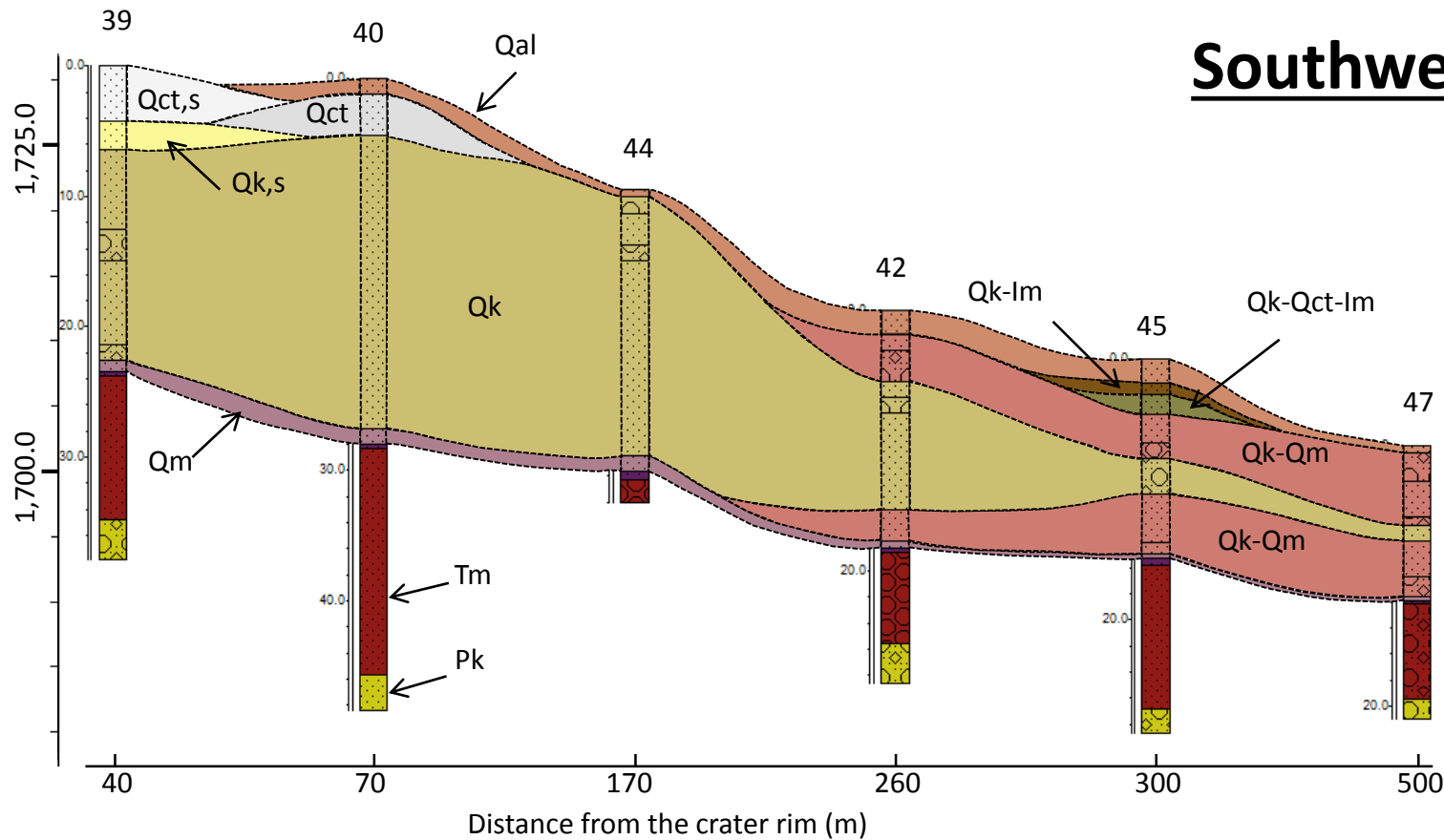
Southwest transect



Southwest transect



Southwest transect



- Heavily-shocked Coconino and Kaibab (in the form of rock flour) are only present in drill hole 39 (~40 m from the crater rim).
- At a distance of ~300 m from the rim, there are varying amounts of impact melt and lechatelierite, up to 38 vol% and 0.86 vol%, respectively, present in drill hole 45.
- The majority of mixing between Kaibab and Moenkopi eject occurs >170 m from the rim, having two zones of mixing.
- Drill holes 42, 45, and 47 are located in a local depression. Therefore, the shallow lens of mixing is likely formed as water-laid deposits of material eroded from higher elevations (Osinski et al., 2015).